



Commercial Grade Stainless Steel.  
Benches, Sinks and Shelves at Everyday Low Prices

## POLYPROPYLENE TROLLEY – ASSEMBLY INSTRUCTIONS

**TROLLEY. CODE: TR3TPS**

**TROLLEY WITH SIDES. CODE: TR3TPS-S**

**NB: YOU WILL NEED TO USE A RUBBER MALLET**

PARTS-Build from the bottom shelf up
1.Handle-2 each
2.Top Shelf-1 each
3.Handle Screws-4 each
4.Rear Enclosure Panel-2 each-Assembly Optional* (only included in Trolley code TR3TPS-S)
5.Side Enclosure Panel-4 each-Assembly Optional* (only included in Trolley code TR3TPS-S)
6.Aluminum Support Post-8 each
7.Middle Shelf-1 each
8.Bottom Shelf-1 each
9.5" (12,7cm) Swivel Caster-4 each
10.Cap-2 each-Assembly Optional

### DIRECTIONS-Prior to assembly:

Check under each shelf to identify top,middle and bottom

Begin assembly with bottom shelf.

Ensure higher side ledges of shelves are in same direction on cart.

**USE RUBBER MALLET ONLY. DO NOT USE METAL HAMMER.**

1.Place one shelf support on each corner locator of bottom shelf.

**NOTE:**Match grooves in shelf support to grooves in shelf corner locators.

2.Use mallet to tap each corner down until there are no gaps between supports and shelf corner locators.

3.If adding panels,slide one panel at a time onto grooves,starting with back panel first,Then add middle shelf.

4.Place a shelf support onto each corner locator and tap down.

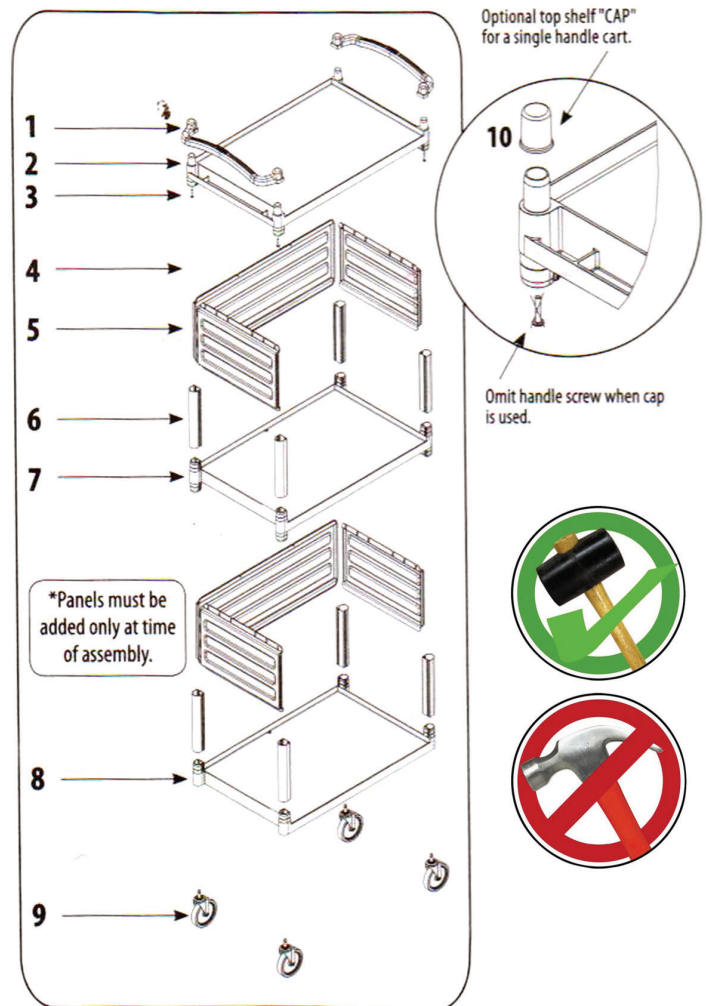
5.Repeat number3 and then 4 if adding one more panel set.

6.Attach handles to top shelf before placing onto cart,Secure with screws through bottom hole of shelf

under each handle end.Then tap top shelf into place.

**NOTE:**When using 1 handle instead of 2,please see diagram above for part #10.

7.Add casters and tap securely into place.



**For more information please contact your nearest Brayco Branch**

**AUSTRALIA**

1300 272 926

customer@brayco.com.au

Brayco.com.au

**NEW ZEALAND**

09 271 5000

sales@braycostainless.co.nz

Braycostainless.co.nz

